

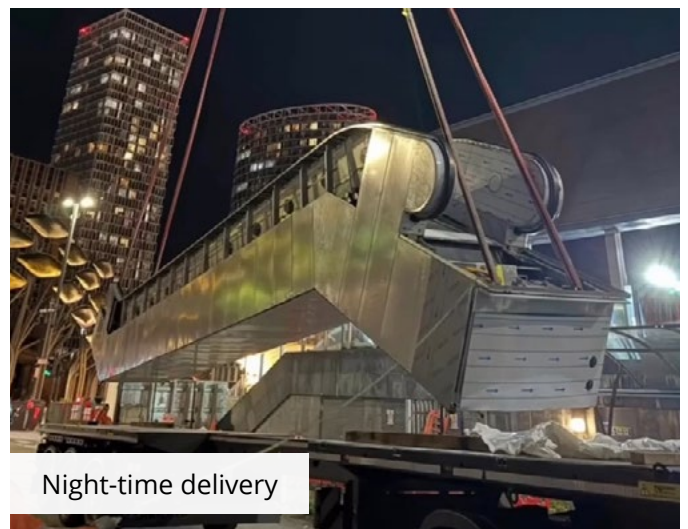


Four New External Heavy-Duty Escalators for Westfield Stratford

Jackson has recently undertaken the full replacement of four heavy-duty external weatherproof escalators at the Westfield Stratford City shopping centre in London. The four escalators are configured side by side in two banks and provide the main pedestrian entrance to Westfield Stratford and from the bus and rail station.

As with all projects of this kind, the escalators were designed and manufactured to exacting customer specifications. The escalators all had an inclination of 30° with the lower bank requiring a vertical rise of 4.1m and the upper bank a rise of 5.9m.

The project required Jackson to remove the existing escalators and install the new escalators during the night when Stratford Station was closed to the public. Apart from the typical logistical management of projects of this type, our Project Managers also undertook the detailed planning, and compliance requirements of Network Rail's Basic Asset Protection Agreement (BAPA) prior to the commencement of any removal or installation work.



Fortunately, there was no major or significant building work needed, and once in progress, the removal and installation of the four escalators only took two weeks to complete. Fixings, assembly, making good, testing and commissioning were all undertaken during the daytime and behind hoardings.